

Hours, minutes and seconds



1 Sort the activities into the table depending on approximately how long each one takes to complete.

travel to school

wash and dry laundry

get dressed

travel to the Moon

watch a TV show

listen to a song

eat a small chocolate bar

sneeze

write your name

Less than 10 seconds	
Less than 1 minute	
Less than 5 minutes	
Less than 1 hour	
More than 1 hour	

2 Complete the statements.

a) 1 minute = seconds

b) 1 hour = minutes

2 minutes = seconds

5 hours = minutes

4 minutes = seconds

10 hours = minutes

80 minutes = seconds

15 hours = minutes

c) 1 day = hours

d) 1 minute = seconds

3 days = hours

1 hour = minutes

12 days = hours

1 hour = seconds

30 days = hours

2 hours = seconds

How did you work this out? Talk about it with a partner.

3 Write <, > or = to complete the statements.

5 minutes 5 seconds

5 minutes 50 seconds

5 minutes 500 seconds

$\frac{1}{2}$ hour 60 minutes

$\frac{1}{2}$ hour 6 minutes

30 minutes $\frac{1}{2}$ hour

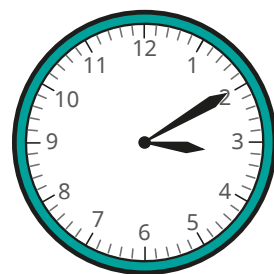
4 Huan runs a race in 3.5 minutes.
Eva runs the race in 312 seconds.

a) Who is faster?

b) How much faster are they?

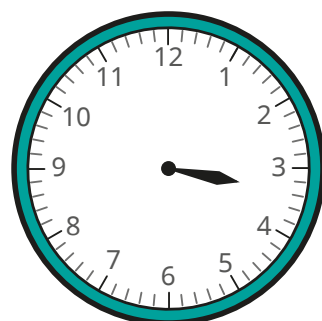
minute seconds

5 The time is 10 minutes past 3

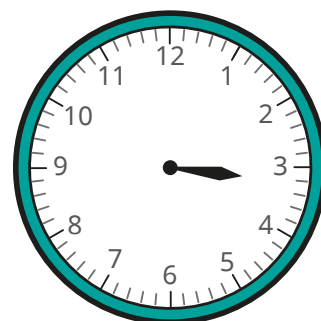


Draw hands on the clocks to show what time it will be:

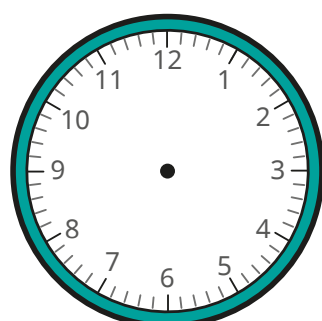
a) in 10 minutes



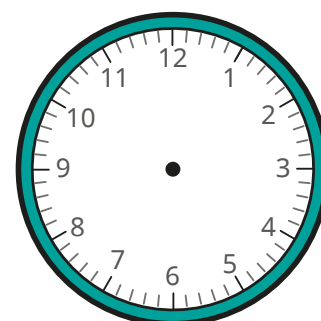
c) in 120 seconds



b) in 60 minutes



d) in 1.5 hours



6 Scott, Kay and Dani time how long it takes to have a shower.

Scott $\frac{1}{10}$ hour **Kay** 315 seconds **Dani** 3 minutes 27 seconds

a) How long does it take them in total? seconds

b) What is the difference between the longest and shortest times?

minutes seconds

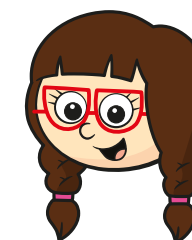


7 Max, Jo, Kim and Mo are going on holiday.



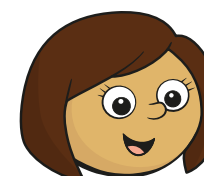
Max

My journey is 12 hours longer than Mo's.



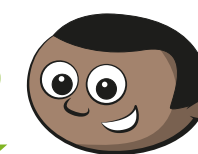
Jo

My journey is $1\frac{1}{4}$ days.



Kim

My journey is twice as long as Max's.



Mo

My journey is 360 minutes.

a) Work out the time of each journey in hours.

Max hours

Jo hours

Kim hours

Mo hours

b) Write the children's names in order of their journey times, starting with the shortest journey.

shortest

longest