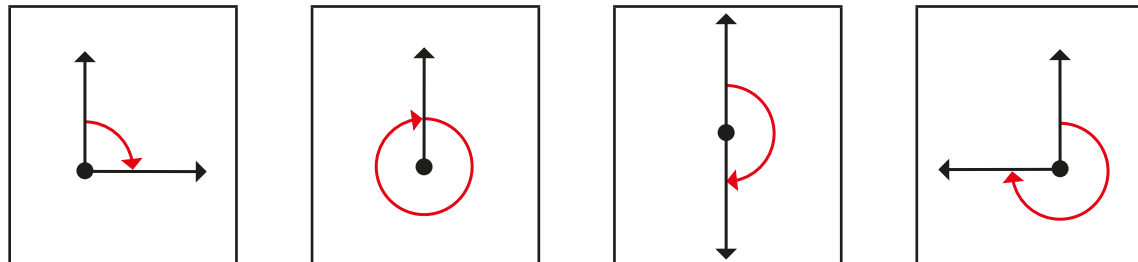


Understand angles as turns

1 Match the pictures to the labels.



half turn quarter turn full turn three-quarter turn

2 Use the words **clockwise** or **anticlockwise** to describe the turns.

a) quarter turn _____

b) three-quarter turn _____

c) quarter turn _____

3 Describe the turns.

a) _____

b) _____

c) _____

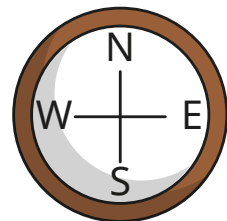
4 Draw what the arrow will look like after each turn.

a) three-quarter turn anticlockwise

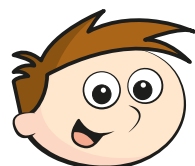
b) three-quarter turn clockwise



5 What direction will each child be facing after their turn?

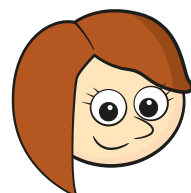


a)



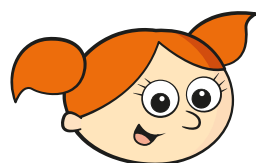
I am facing north.
I make a three-quarter
turn anticlockwise.

b)



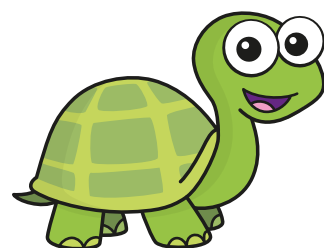
I am facing south.
I make a quarter
turn clockwise.

c)



I am facing west.
I make a half turn.

6



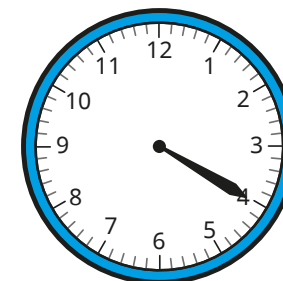
A three-quarter turn
clockwise is the same
as a half turn then a
quarter turn clockwise.

Write another set of turns that is equal to a three-quarter
turn clockwise.

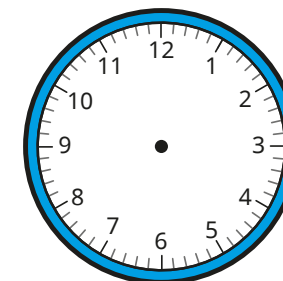
Compare answers with a partner.

7 Draw the missing minute hands on the clocks.

a)

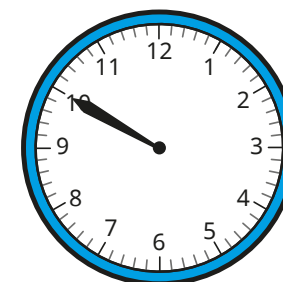


start

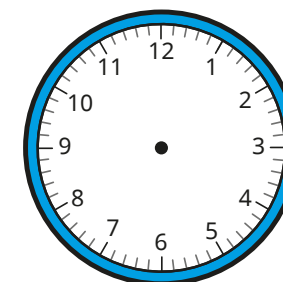


quarter of an hour later

b)

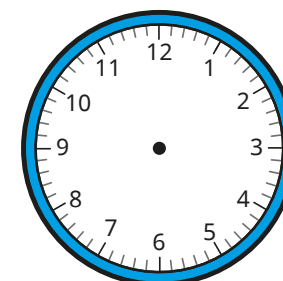


start

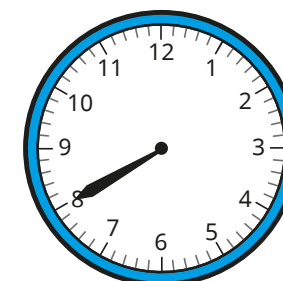


three-quarters of an hour later

c)



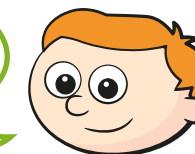
start



half an hour later

8

I make a full turn
clockwise and then another
half turn clockwise.



How many quarter turns clockwise has Ron made?

Describe Ron's turns another way.

How many ways can you find?

