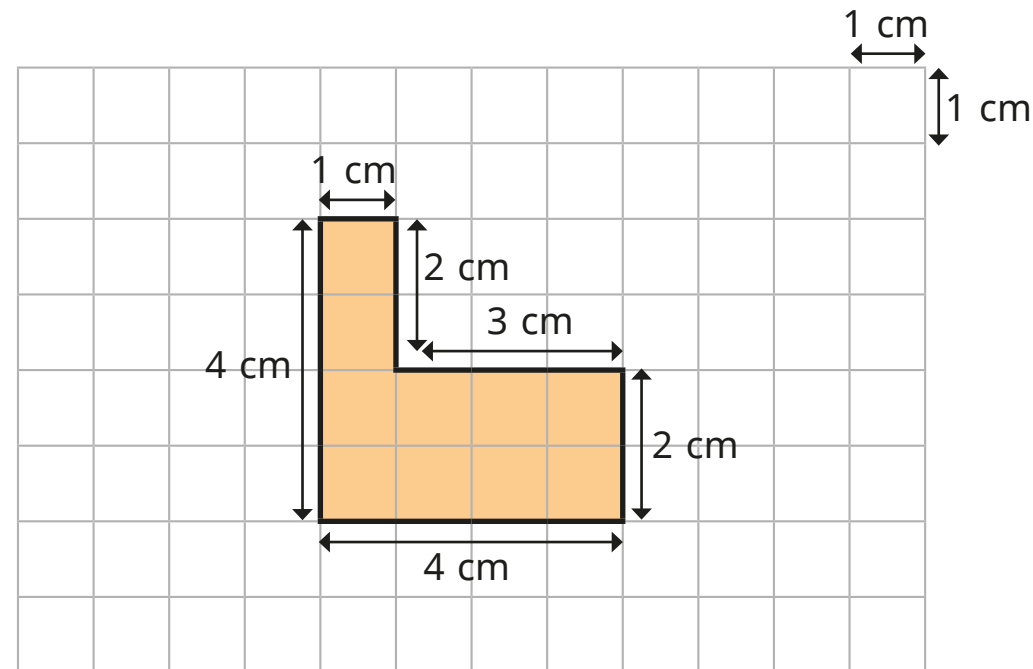


Perimeter of rectilinear shapes



1 A rectilinear shape is drawn on a squared grid.



a) How many sides does the shape have?

b) How many side lengths do you need to add together to work out the perimeter of the shape?

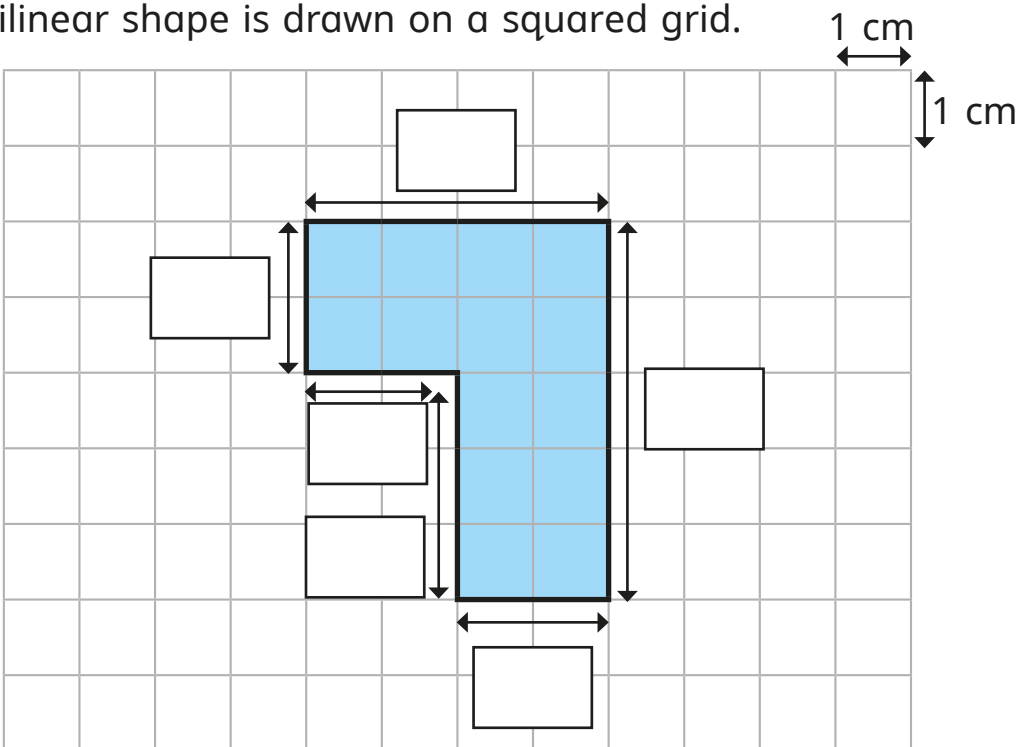
c) Work out the perimeter of the shape.

 cm

Why is the number of sides important?



2 A rectilinear shape is drawn on a squared grid.



a) Label the side lengths on the shape.

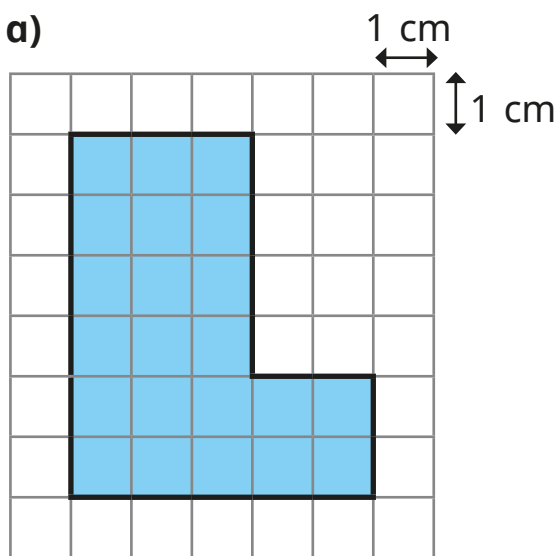
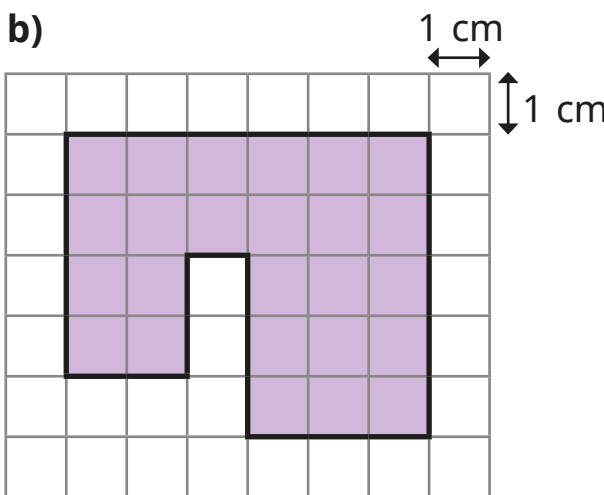
b) How many side lengths do you need to add together to find the perimeter of the shape?

How do you know?

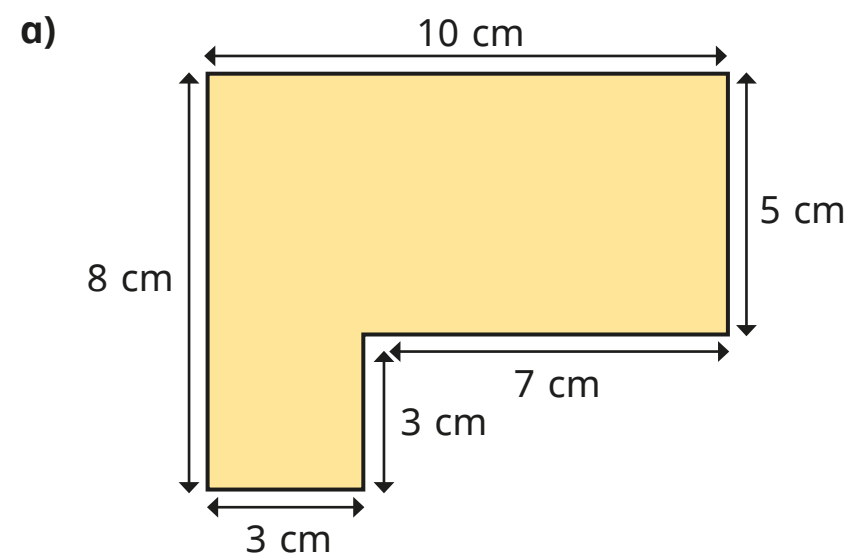
c) What is the perimeter of the shape?

 cm

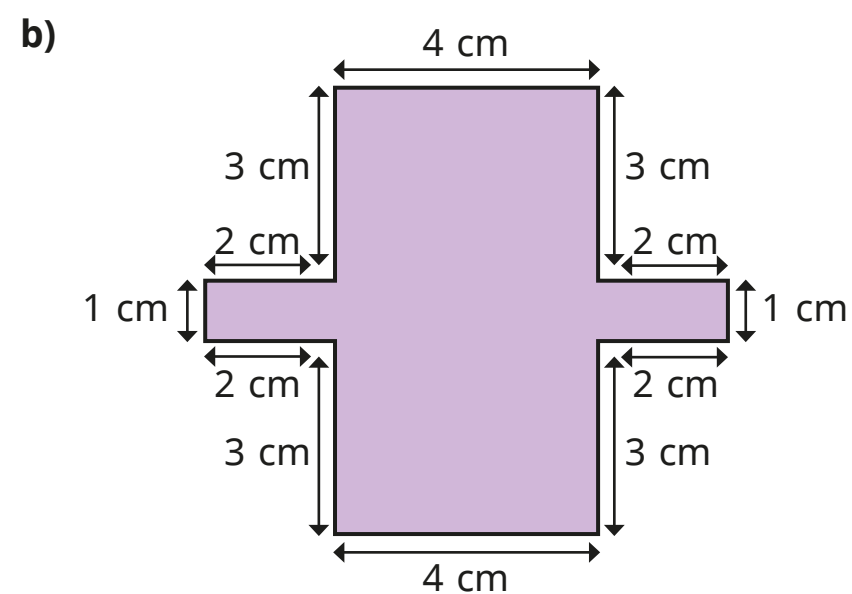
3 Work out the perimeters of the shapes.

 cm cm

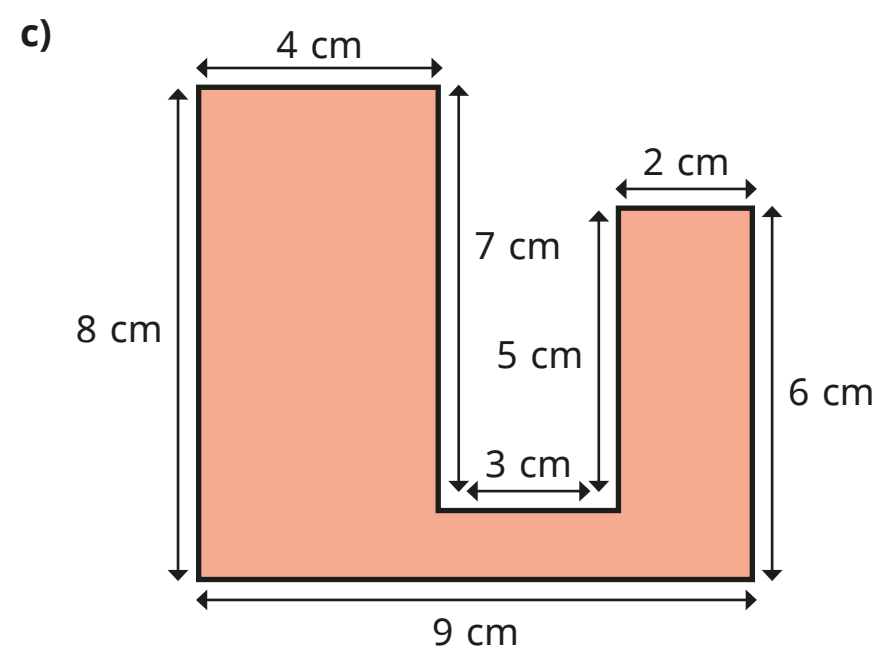
4 Work out the perimeters of the shapes.



cm



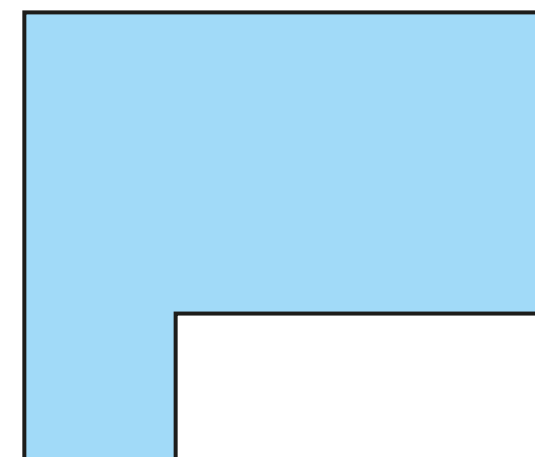
cm



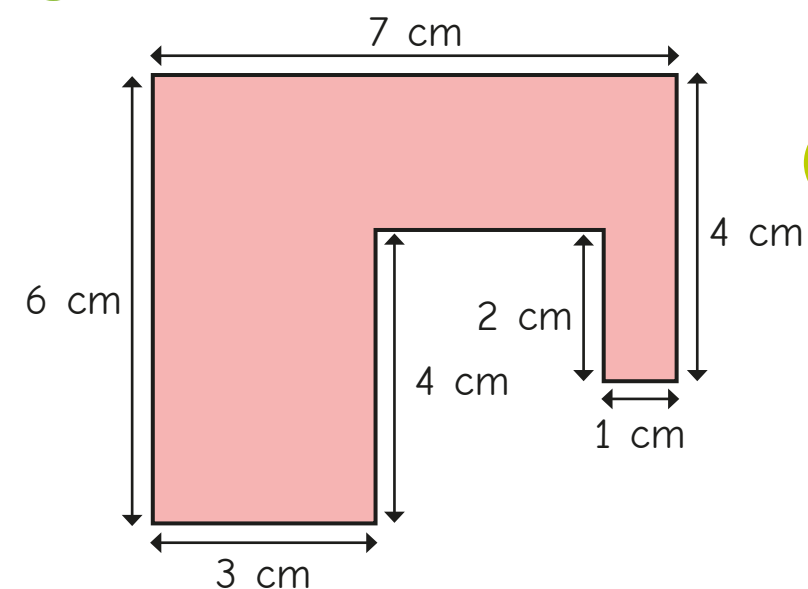
cm

5 Measure the lengths of the sides.

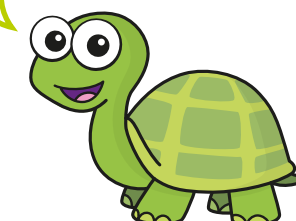
What is the perimeter of the shape?



6 Tiny has worked out the perimeter of this shape.



The perimeter is 27 cm.



What mistake has Tiny made?
