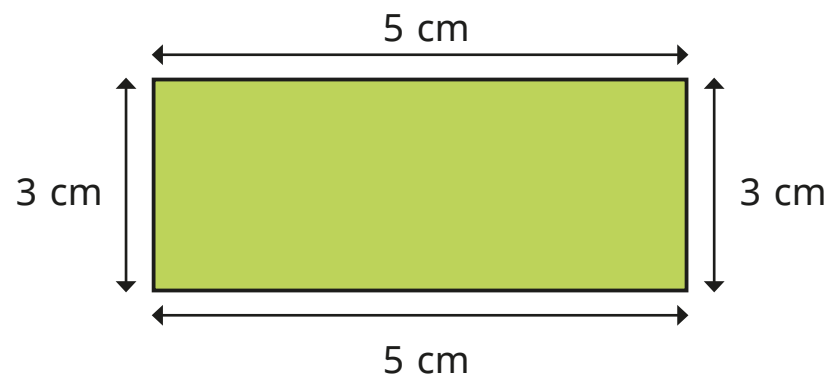


# Calculate perimeter

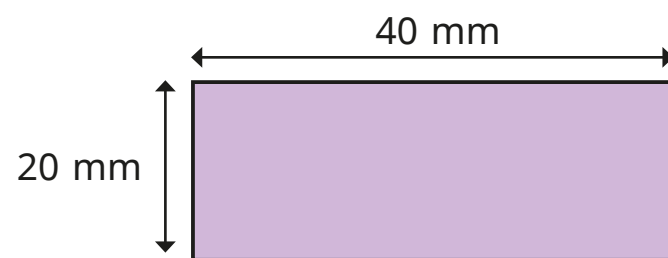
1 Work out the perimeter of each shape.

a)



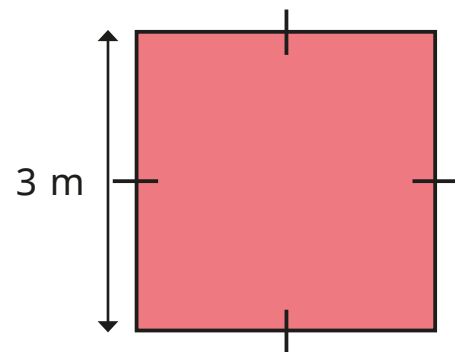
cm

b)



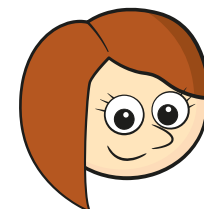
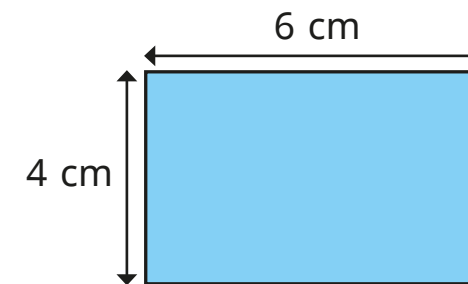
mm

c)



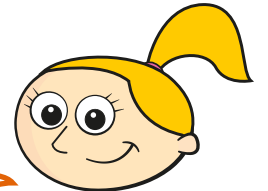
m

2 Rosie and Eva work out the perimeter of the shape.



Rosie

$6 + 4 = 10$ ,  
so the perimeter  
is 10 cm.



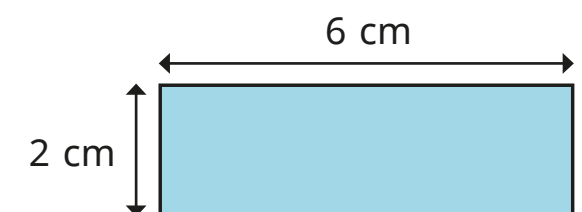
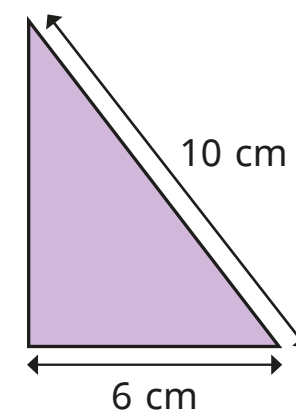
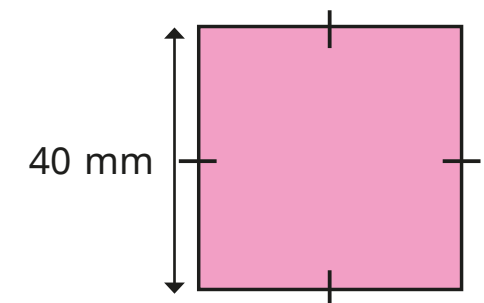
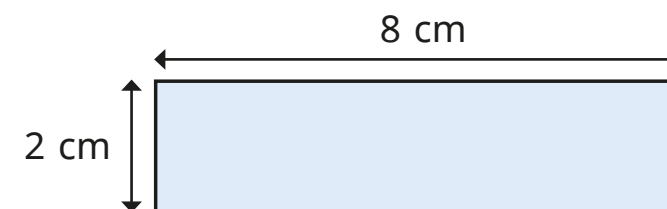
Eva

The perimeter  
is 20 cm.

Who is correct?

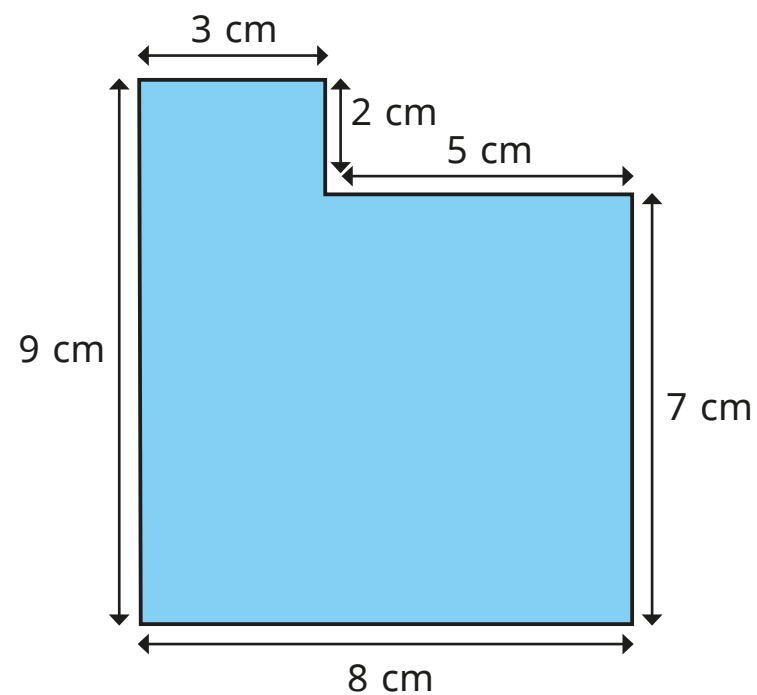
How do you know?

3 Tick the shapes that have a perimeter of 16 cm.



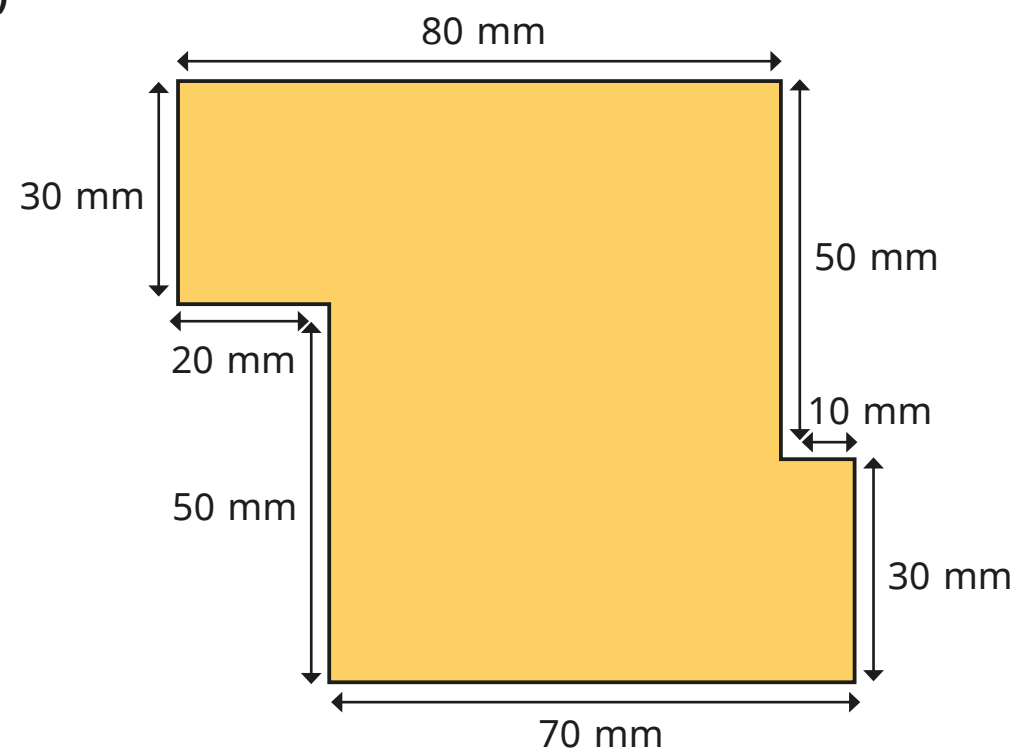
4 Work out the perimeter of each shape.

a)



cm

b)

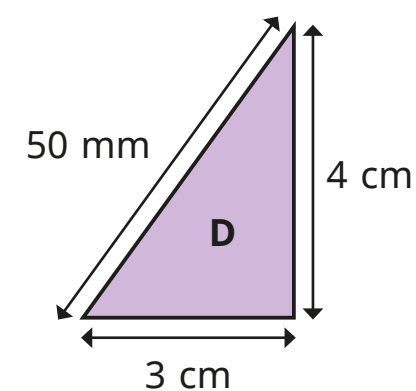
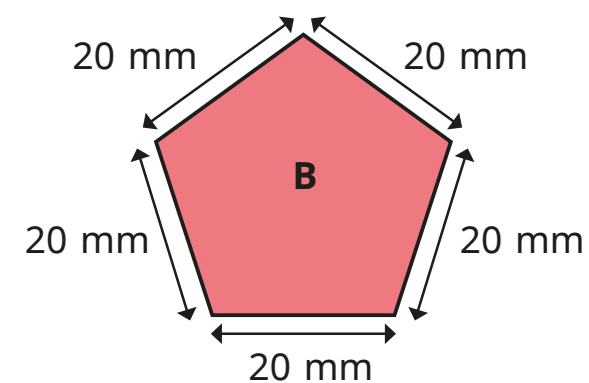
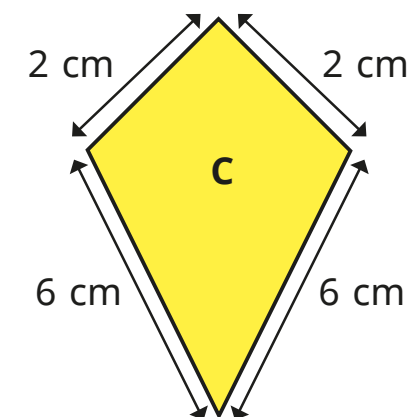
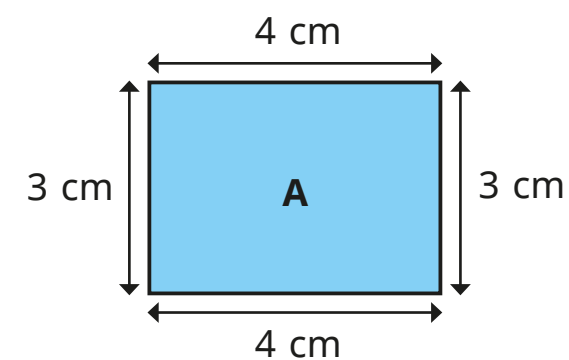


cm

What do you notice?

5 Put the shapes in order of their perimeters.

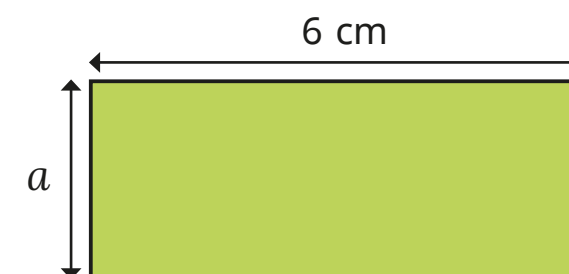
Start with the greatest perimeter.



\_\_\_\_\_

6 This rectangle has a perimeter of 18 cm.

Work out the length of side  $a$ .



cm