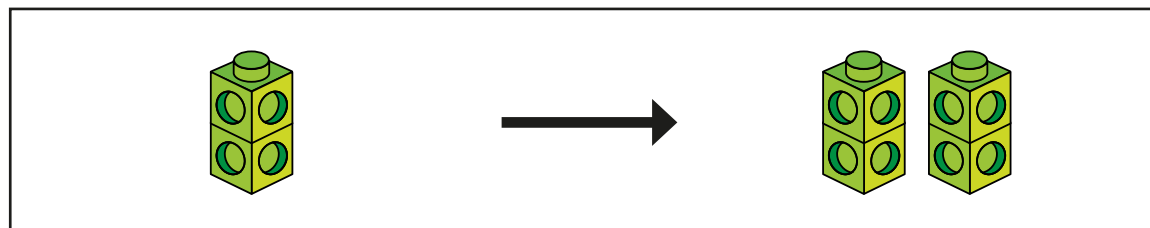
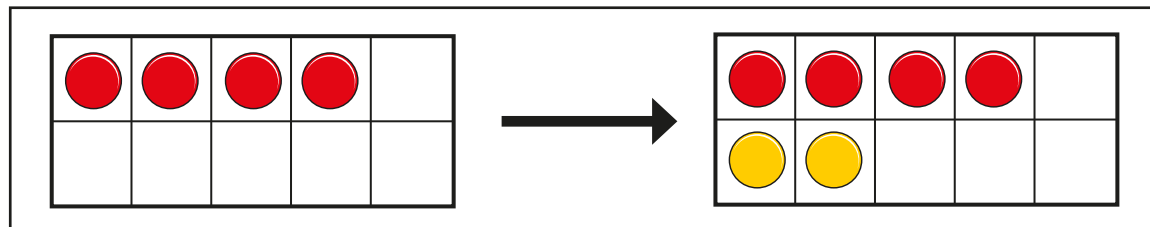
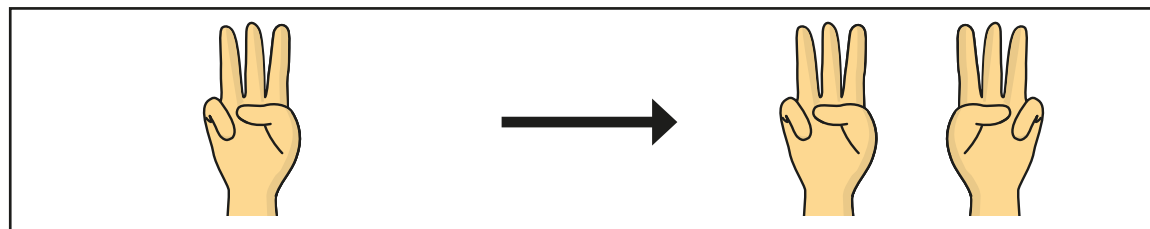
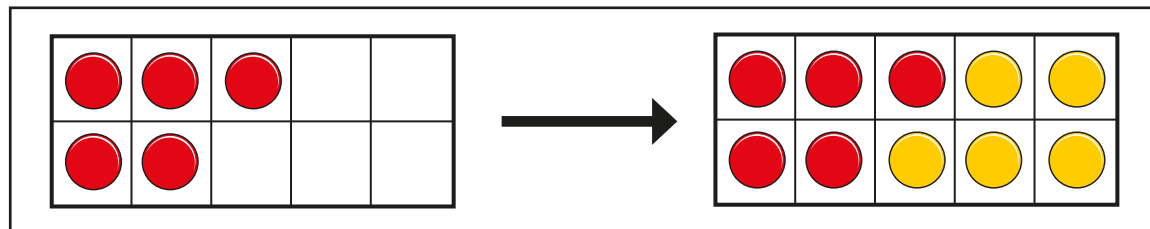
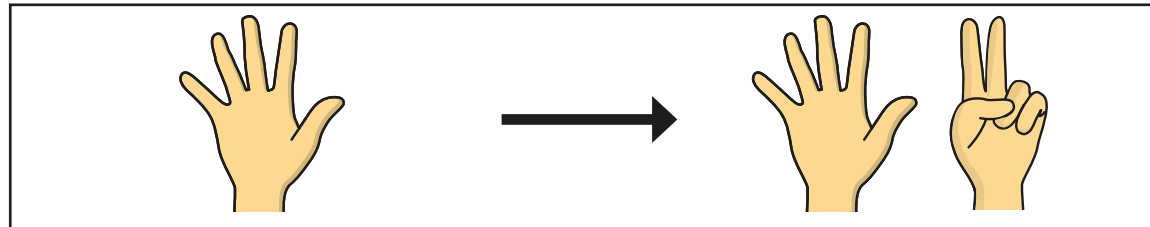


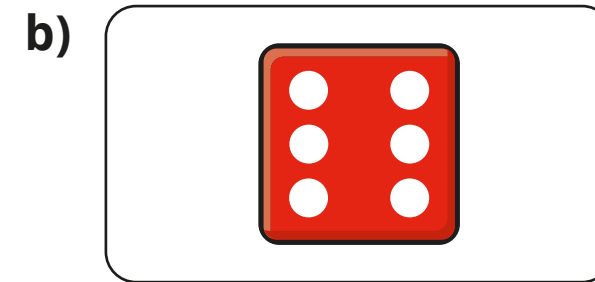
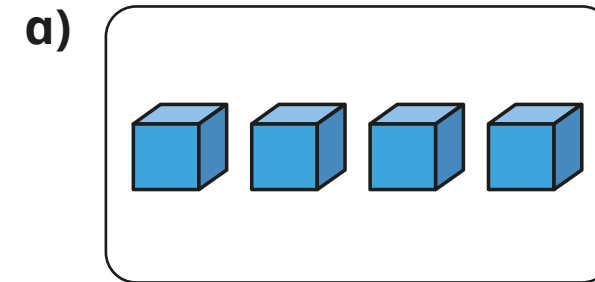
1 Tick the pictures that show doubling.



Talk about your answers with a partner.

Why do some of the pictures **not** show doubling?

2 Draw the double of each picture.



3 Complete the sentences.

a) Double 3 is equal to $3 + 3$

Double 3 is equal to $\times 2$

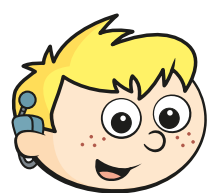
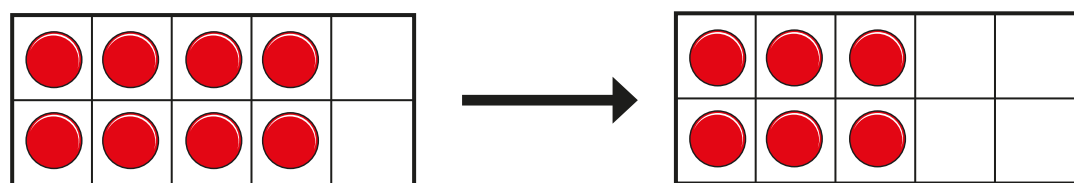
Double 3 is equal to

b) Double is equal to $8 + 8$

Double is equal to \times

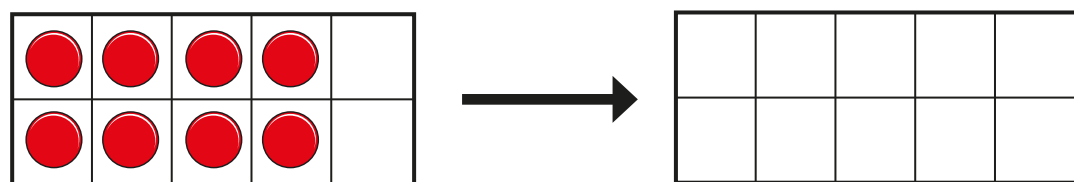
Double is equal to

4 Max is halving 8



Half of 8 is 6

- a) What mistake has Max made?
- b) Draw counters to show half of 8



5 Complete the sentences.

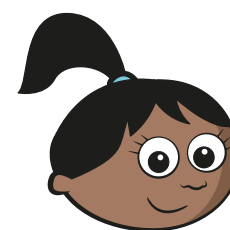
a) Half of 10 is equal to $\div 2$

Half of 10 is equal to

b) Half of is equal to $22 \div 2$

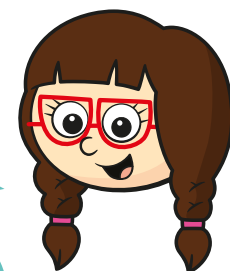
Half of is equal to

6 Sam is thinking of a number.



Sam

Half of my number is 4



Jo

Sam is thinking of the number 2

Do you agree with Jo? _____
Explain your reasons to a partner.

7 Work out the doubles and halves.

a) double 20 =

b) half of 60 =

c) double = 10

d) half of = 10

Compare methods with a partner.