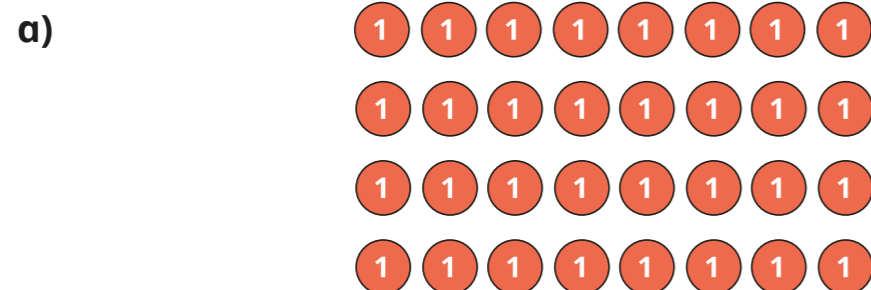
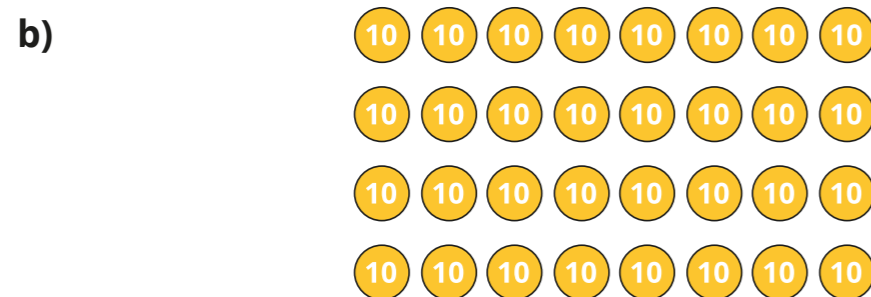


# Link multiplication and division

1 Write two multiplication and two division facts shown by each array.



<input type="text"/> × <input type="text"/> = <input type="text"/>	<input type="text"/> ÷ <input type="text"/> = <input type="text"/>
<input type="text"/> × <input type="text"/> = <input type="text"/>	<input type="text"/> ÷ <input type="text"/> = <input type="text"/>



<input type="text"/> × <input type="text"/> = <input type="text"/>	<input type="text"/> ÷ <input type="text"/> = <input type="text"/>
<input type="text"/> × <input type="text"/> = <input type="text"/>	<input type="text"/> ÷ <input type="text"/> = <input type="text"/>

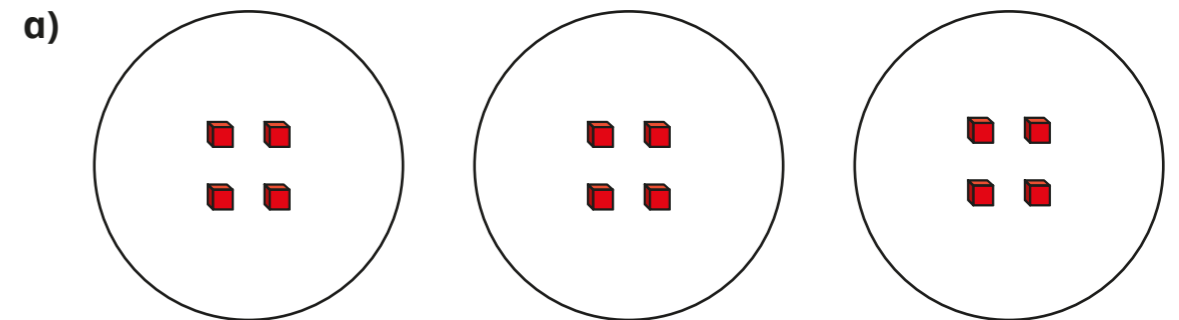
What is the same about the arrays?

What is different?

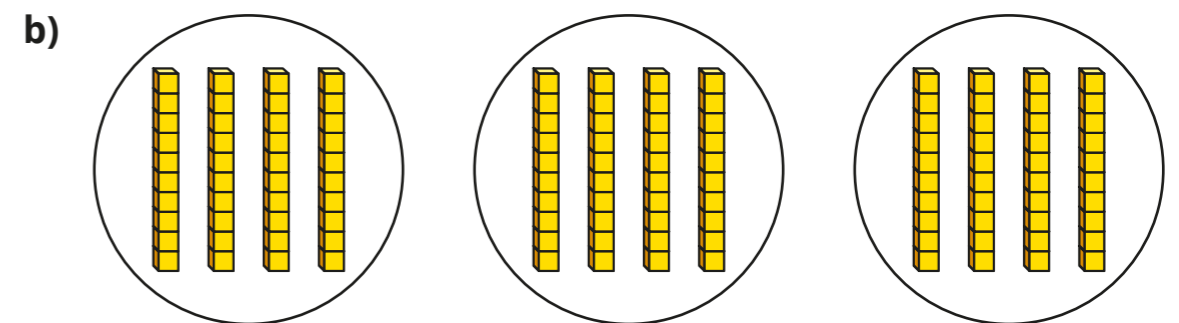
Talk about it with a partner.



2 Write two multiplications and two divisions shown by each picture.



<input type="text"/> × <input type="text"/> = <input type="text"/>	<input type="text"/> ÷ <input type="text"/> = <input type="text"/>
<input type="text"/> × <input type="text"/> = <input type="text"/>	<input type="text"/> ÷ <input type="text"/> = <input type="text"/>



<input type="text"/> × <input type="text"/> = <input type="text"/>	<input type="text"/> ÷ <input type="text"/> = <input type="text"/>
<input type="text"/> × <input type="text"/> = <input type="text"/>	<input type="text"/> ÷ <input type="text"/> = <input type="text"/>

3

$6 \times 4 = 24$

$24 \div 4 = 6$

Use the facts to complete the number sentences.

a)  $6 \times 40 = \square$

c)  $240 \div 4 = \square$

b)  $60 \times 4 = \square$

d)  $240 \div 40 = \square$

4 Complete the sentences.

a)  $8 \text{ ones} \div 2 = \square$  ones

c)  $9 \text{ ones} \div 3 = \square$  ones

$8 \text{ tens} \div 2 = \square$  tens

$9 \text{ tens} \div 3 = \square$  tens

$80 \div 2 = \square$

$90 \div 3 = \square$

b)  $8 \text{ ones} \div 4 = \square$  ones

d)  $10 \text{ ones} \div 10 = \square$  one

$8 \text{ tens} \div 4 = \square$  tens

$10 \text{ tens} \div 10 = \square$  ten

$80 \div 4 = \square$

$100 \div 10 = \square$

5 Fill in the missing numbers.

a)  $3 \times \square = 90$

d)  $\square \times 20 = 160$

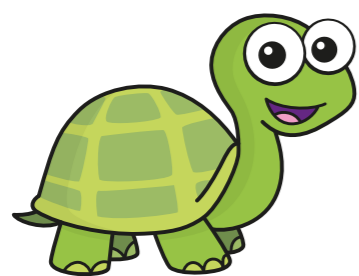
b)  $8 \times \square = 240$

e)  $360 = 6 \times \square$

c)  $\square \times 5 = 150$

f)  $280 = \square \times 40$

6



$32 \div 8 = 4$ , so  
 $320 \div 80 = 40$

Do you agree with Tiny? \_\_\_\_\_

Explain your answer.

7 Write  $<$ ,  $>$  or  $=$  to compare the calculations.

a)  $3 \times 40 \bigcirc 30 \times 4$

d)  $30 \times 6 \bigcirc 30 \div 6$

b)  $80 \div 4 \bigcirc 80 \div 5$

e)  $5 \times 30 \bigcirc 4 \times 60$

c)  $90 \div 30 \bigcirc 90 \div 3$

f)  $2 \times 70 \bigcirc 240 \div 3$

8 48 buttons fill 4 boxes.

How many boxes do 480 buttons fill?

9 It costs £240 for 6 tickets to the zoo.

How much does 1 ticket cost?

£

10 The mass of 10 cookies is 240 g.

The mass of 20 sweets is 100 g.

What is the total mass of 2 cookies and 3 sweets?

 g