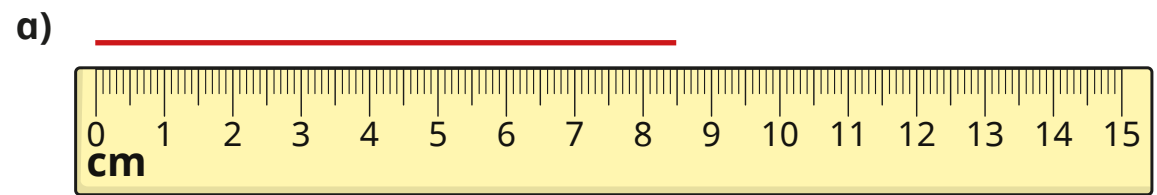
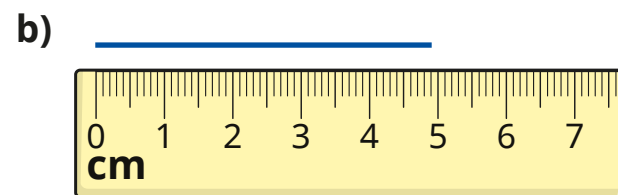


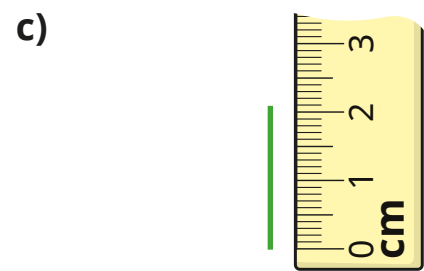
1 What is the length of each line?



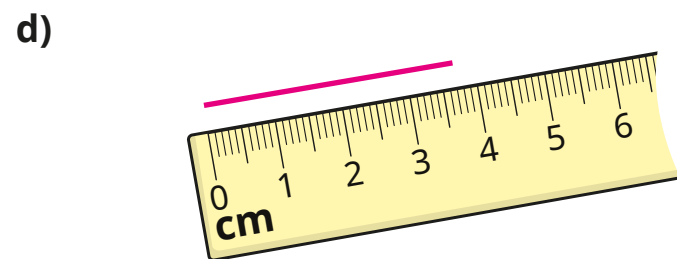
cm and mm



cm and mm

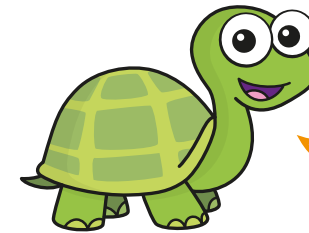
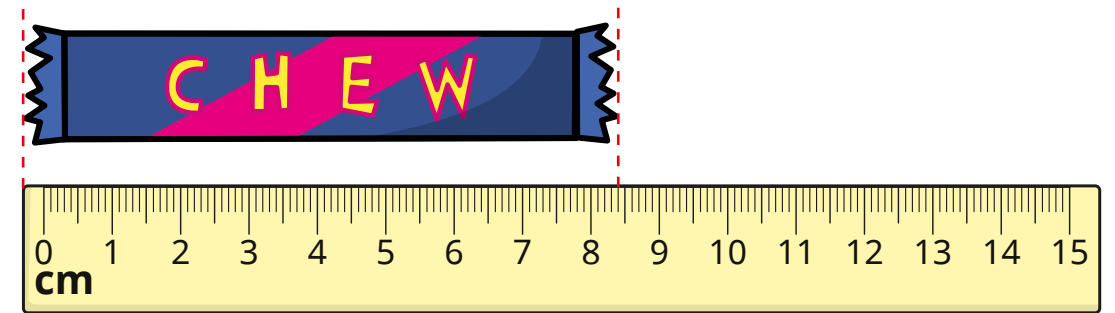


cm and mm



cm and mm

2 Tiny is measuring the length of a sweet chew.

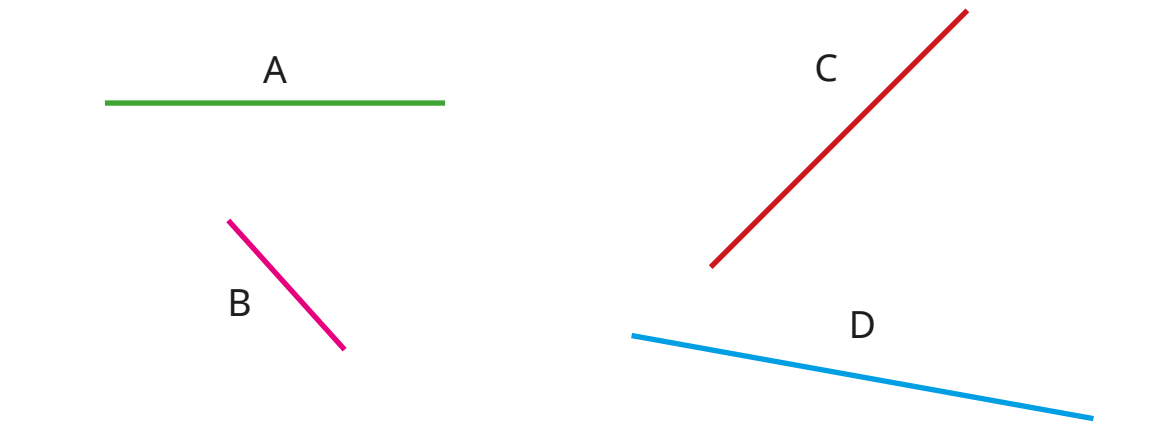


The chew is 8 cm and 4 mm long.

What mistake has Tiny made?

3 Measure the lengths of the lines.

Give your answers in centimetres and millimetres.



A cm and mm

C cm and mm

B cm and mm

D cm and mm



- 4 Measure the lengths of some items in your classroom.
Sort your items into the table.

Less than 80 mm	Between 80 mm and 150 mm	Greater than 150 mm



- 5 Use a ruler to draw lines of these lengths.

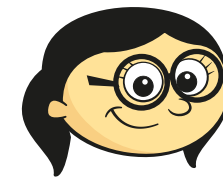
a) 5 cm and 7 mm

b) 9 cm and 1 mm

c) 2 cm and 3 mm

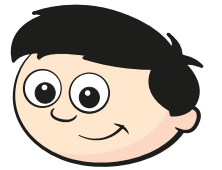


- 6 Annie and Dexter have each drawn a line.



Annie

My line is 5 cm and 4 mm long.



Dexter

My line is 5 mm shorter than Annie's line.

Draw Dexter's line.



- 7 Draw a line that is longer than 38 mm, but shorter than 4 cm and 3 mm.

Compare answers with a partner.

