

# The 3, 6 and 9 times-tables

1 Complete the number tracks.

Use what you notice about each pair to complete the sentences.

a) 

3	6		12		18	
---	---	--	----	--	----	--

6		18	24	30		
---	--	----	----	----	--	--

The 6 times-table is \_\_\_\_\_ the 3 times-table.

b) 

	6	9				21
--	---	---	--	--	--	----

9	18		36			
---	----	--	----	--	--	--

The 9 times-table is \_\_\_\_\_ the 3 times-table.

2 Complete the calculations.

a)  $9 \times 3 = \square$

e)  $6 \times \square = 36$

b)  $3 \times 7 = \square$

f)  $72 \div 9 = \square$

c)  $6 \times 7 = \square$

g)  $48 \div 6 = \square$

d)  $9 \times \square = 36$

h)  $24 \div \square = 3$

3 Here is a hundred square.

1	2	3	4	5	6	7	8	9	10
11	12	13	14	15	16	17	18	19	20
21	22	23	24	25	26	27	28	29	30
31	32	33	34	35	36	37	38	39	40
41	42	43	44	45	46	47	48	49	50
51	52	53	54	55	56	57	58	59	60
61	62	63	64	65	66	67	68	69	70
71	72	73	74	75	76	77	78	79	80
81	82	83	84	85	86	87	88	89	90
91	92	93	94	95	96	97	98	99	100

a) Circle the multiples of 3 on the hundred square.

b) Shade the multiples of 6

c) Underline the multiples of 9

What do you notice?

4 Are the statements always true, sometimes true or never true?

a) Multiples of 9 are also multiples of 3 \_\_\_\_\_

b) Multiples of 3 are also multiples of 6 \_\_\_\_\_

c) Multiples of 6 are also multiples of 9 \_\_\_\_\_

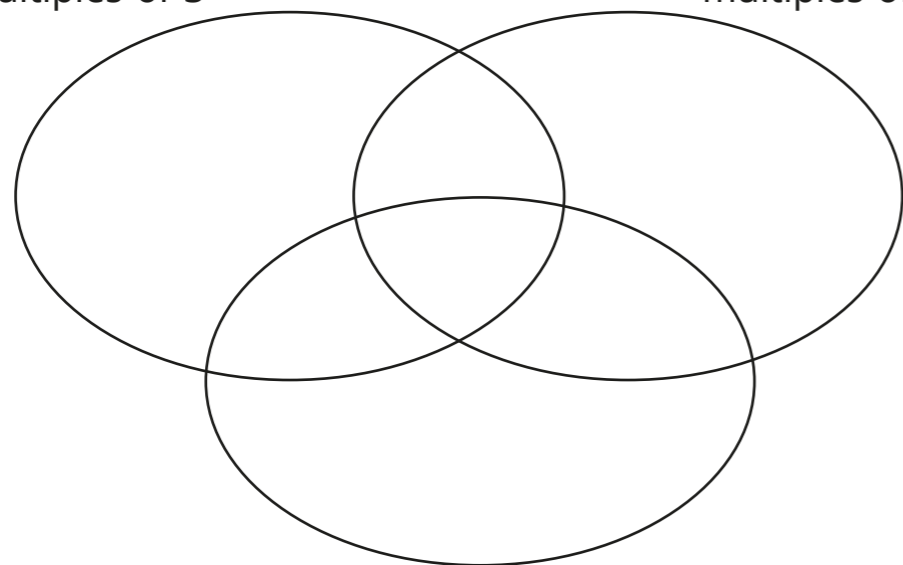
Explain your reasons.

5 Write the numbers in the sorting diagram.

3 18 27 54 93 66 12 39

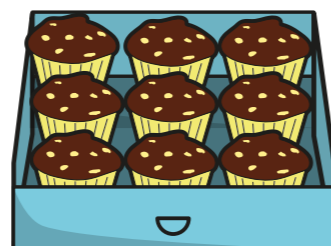
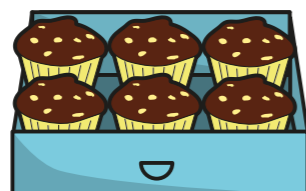
multiples of 3

multiples of 6



multiples of 9

6 Muffins are sold in boxes of 3, 6 and 9



Mrs Rose buys three of each size box.

How many muffins does Mrs Rose have altogether?

Compare methods with a partner.

7

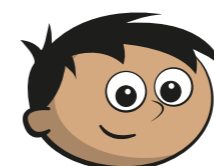


$36 \div 3 = 12$   
6 is double 3,  
so  $36 \div 6 = 24$

Do you agree with Tiny? \_\_\_\_\_

Talk about your answer with a partner.

8



I know that  
 $3 \times 42 = 126$

a) Use Amir's fact to find  $6 \times 42$

b) Use Amir's fact to find  $42 \times 9$

9

Complete the number sentence by writing the same digit in each box.

$$6 \div \square < 6 + \square < \square \times 3$$

